



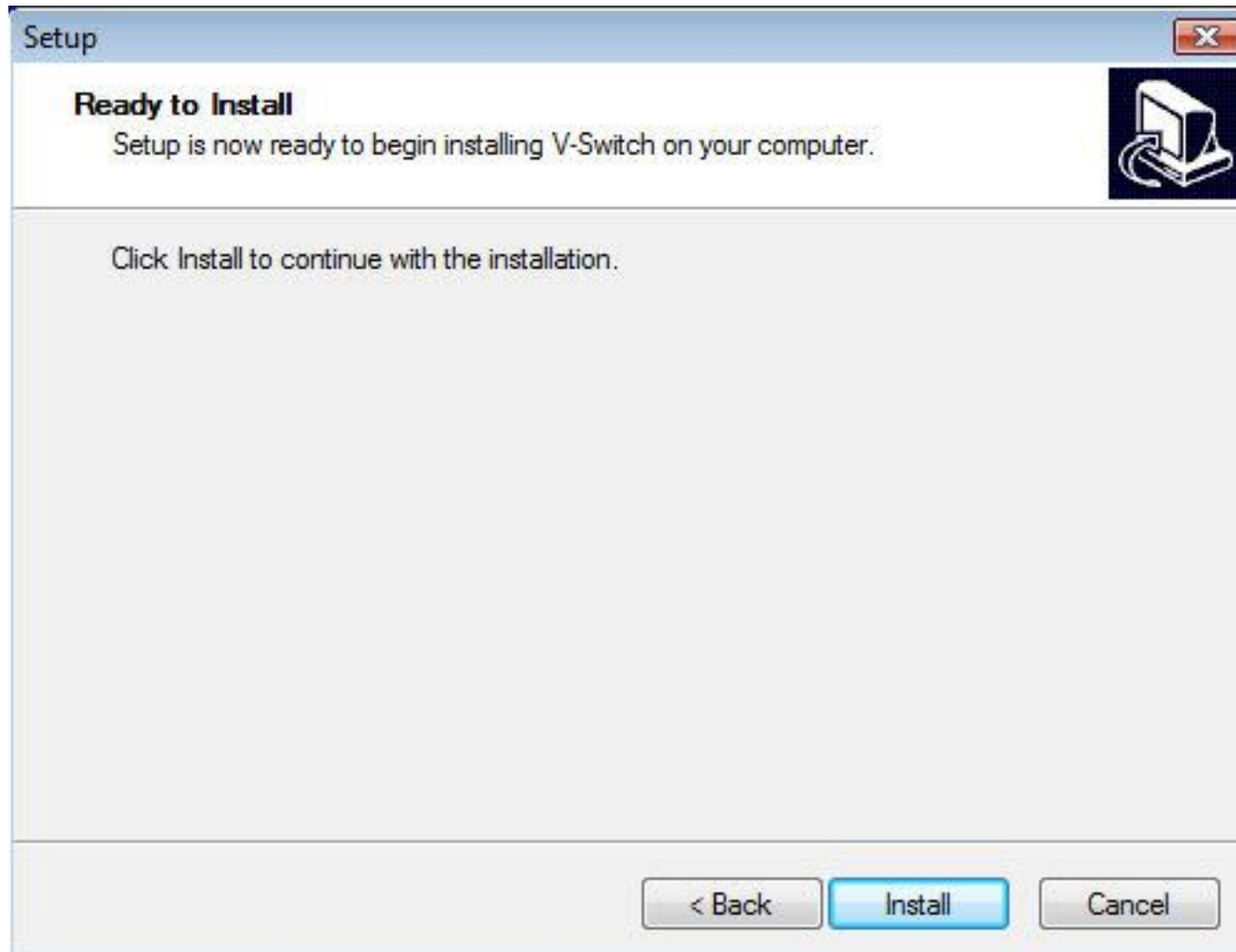
VIEZU™
TECHNOLOGIES

V-switch
Complete User Guide

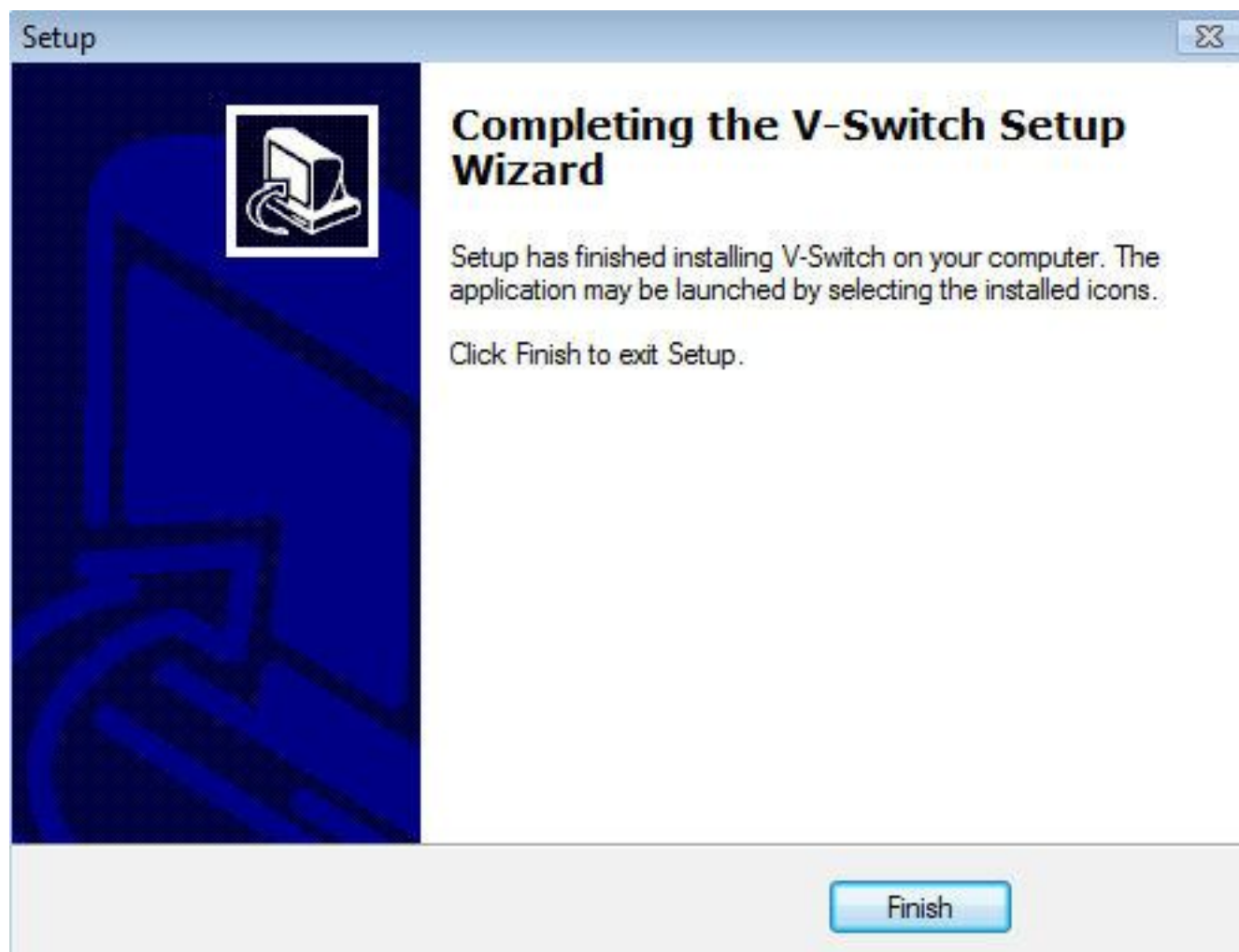
Open the software to begin the installation process and click next



Click install to continue



The software has been successfully installed



This is what the V-Console icon will look like on your desktop



Before opening the software you must firstly connect the V-switch via the USB cable to your PC

Then follow the instructions on the next page to install the device driver

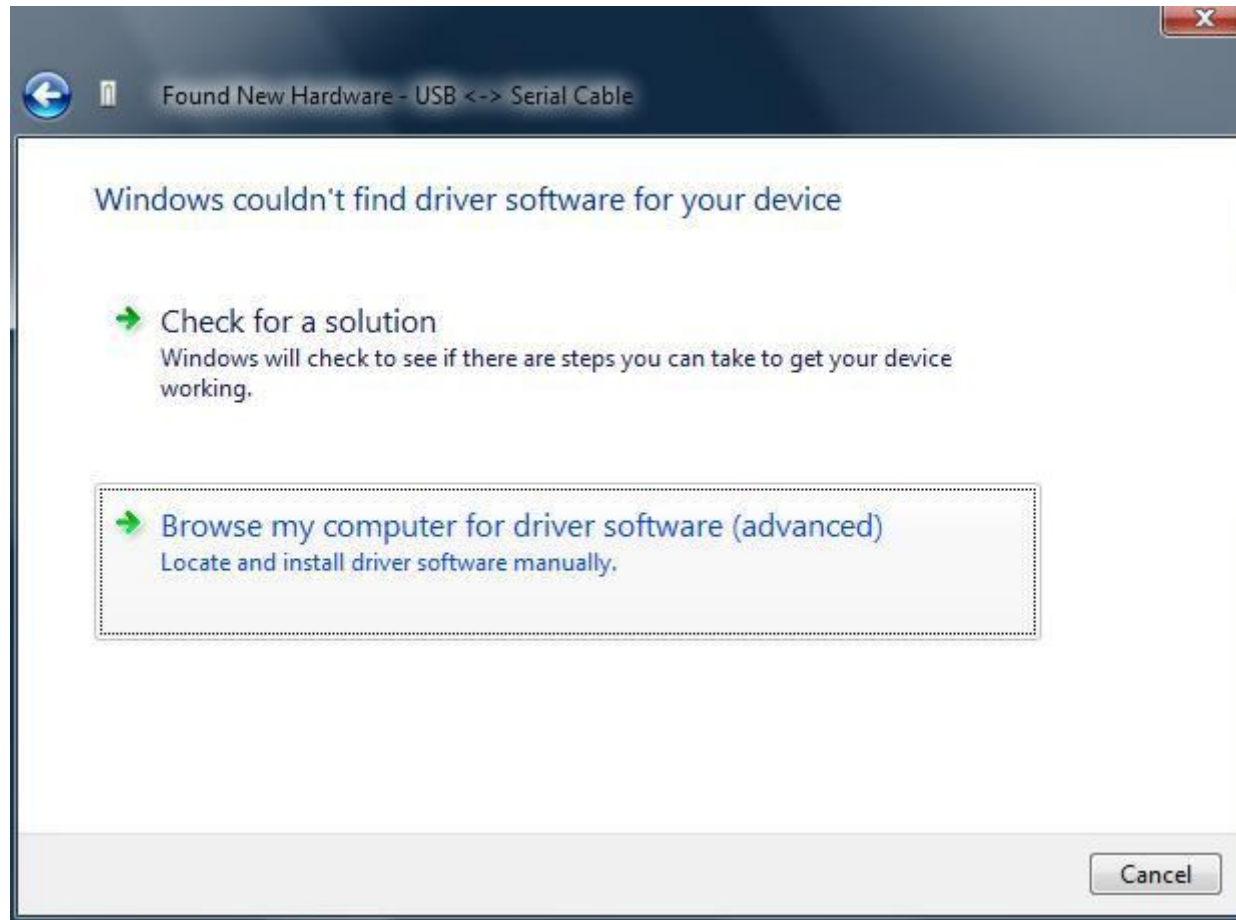
Select, locate and install driver software (recommended)



Now click on the option at the bottom of the screen to search other options

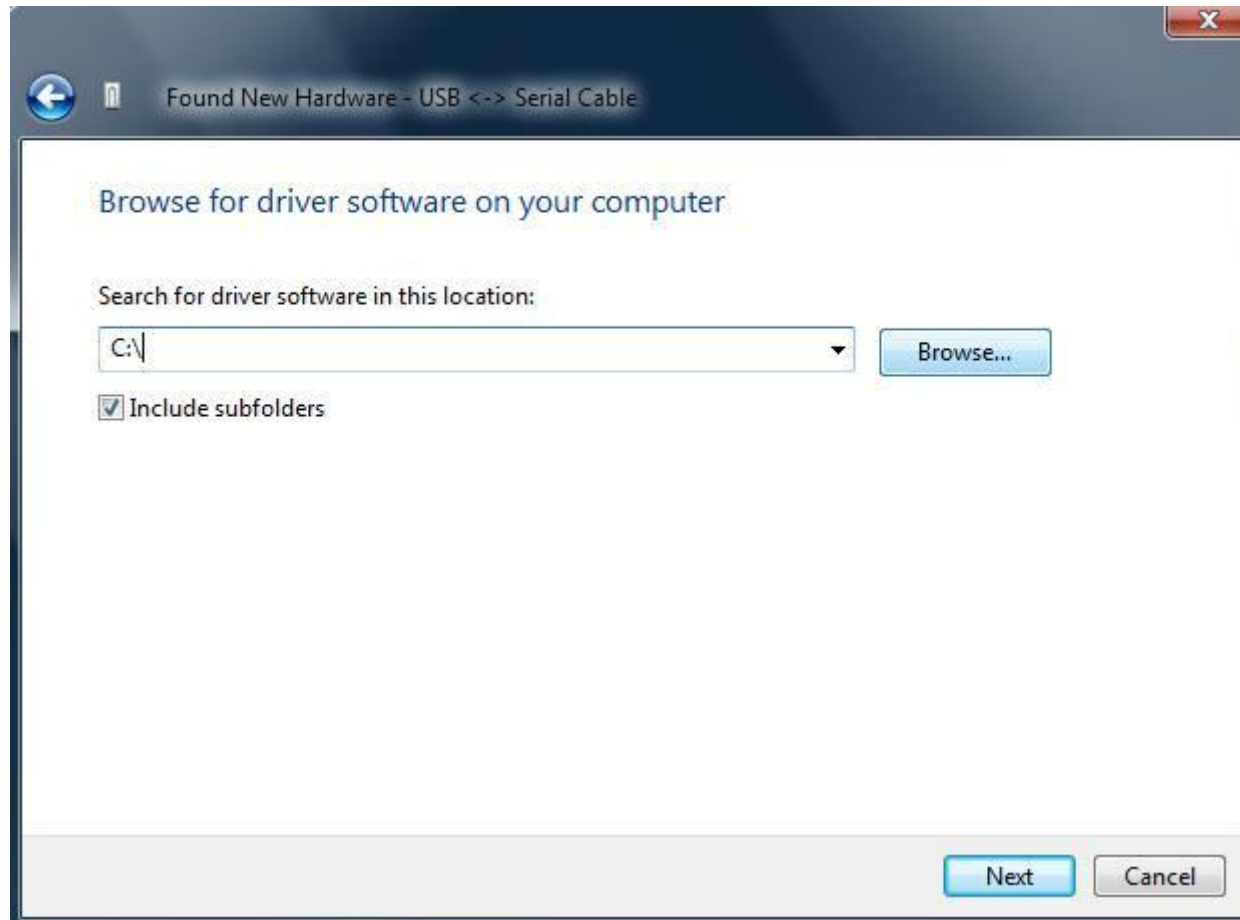


Windows will not automatically recognise the cable
in most cases



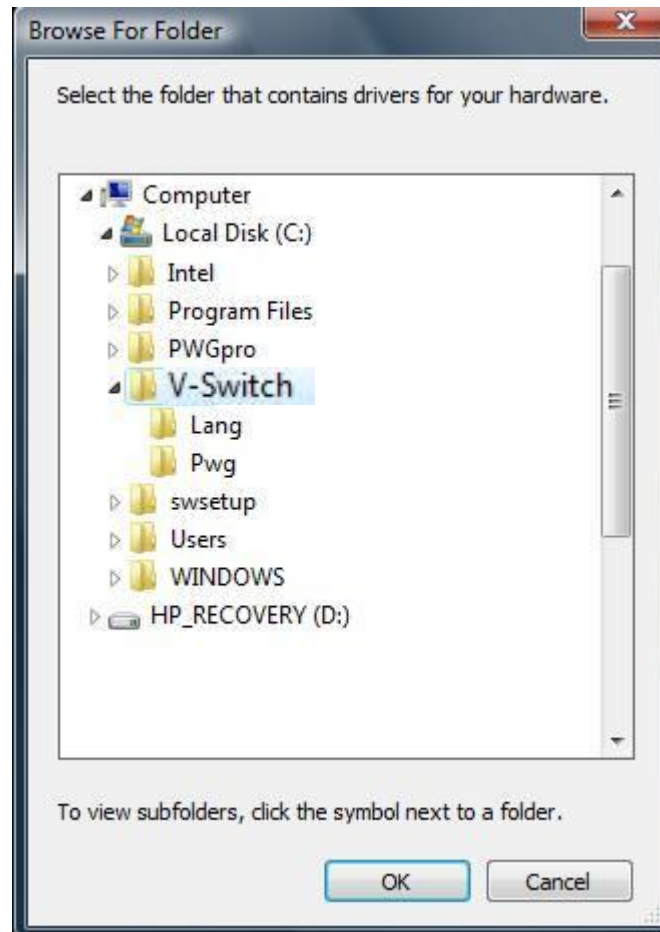
Select browse my computer to tell
windows where to look for the driver

Choose the option: browse

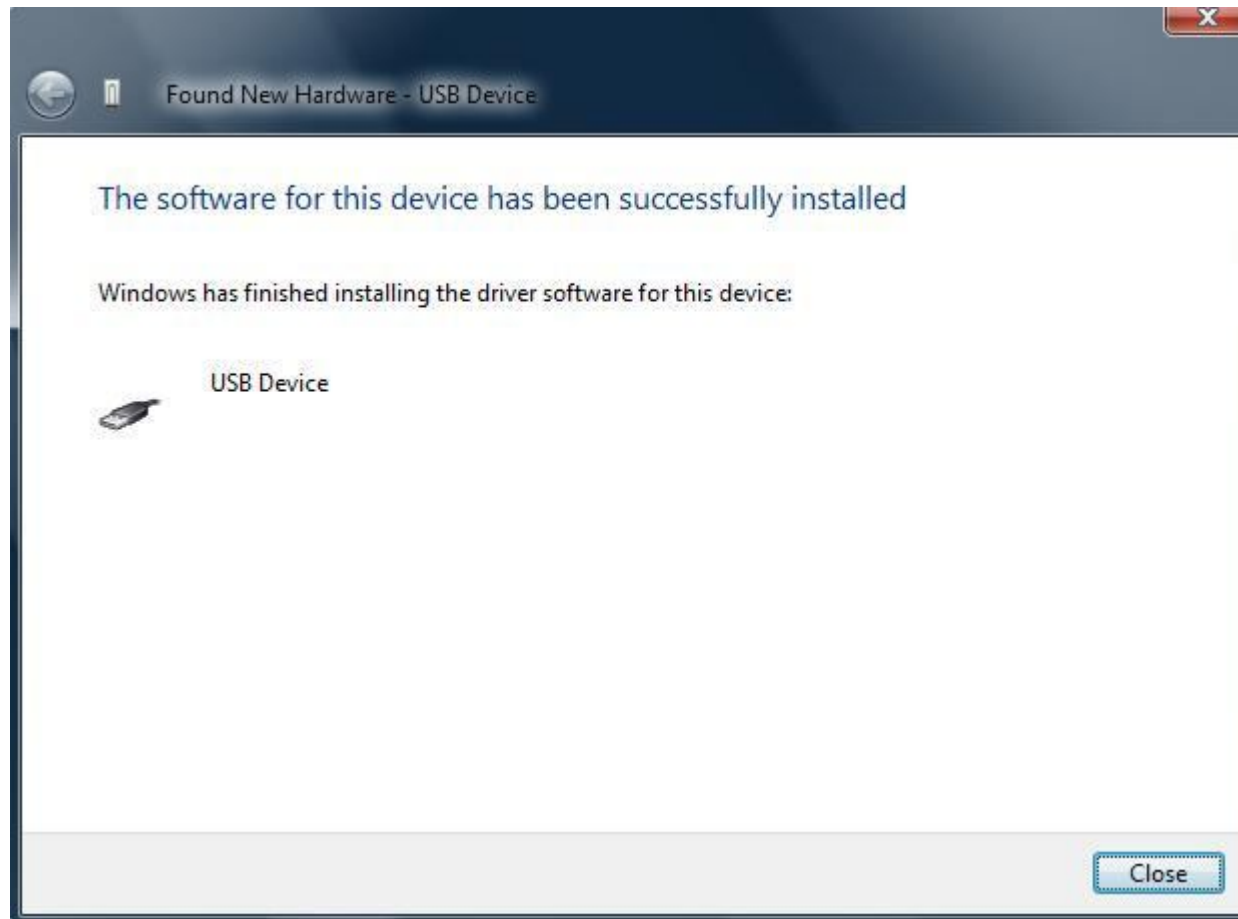


Select: Computer – Local Disk (C:) – V-switch

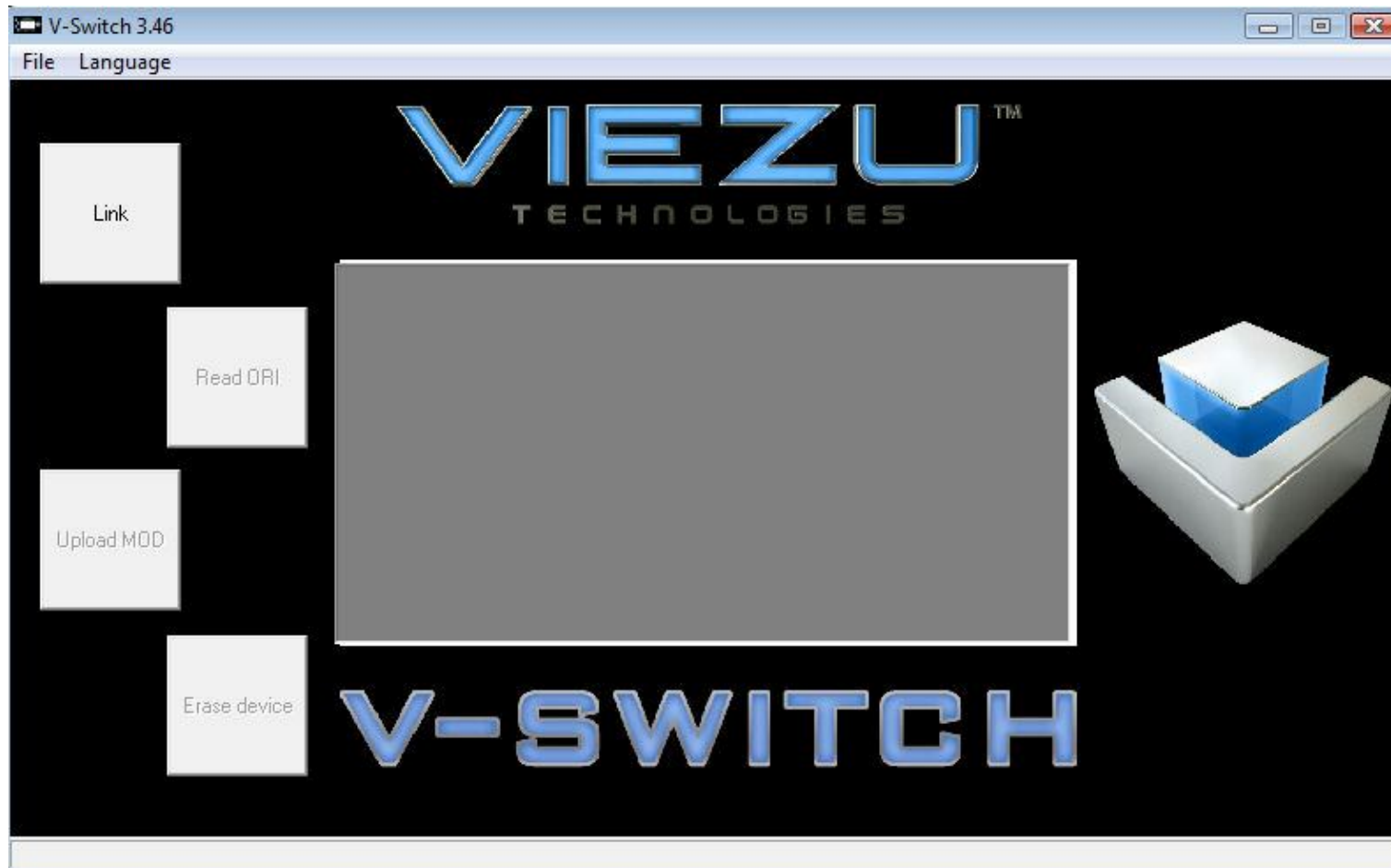
Make sure the V-switch is highlighted in blue and then select 'OK'



The driver is now successfully installed

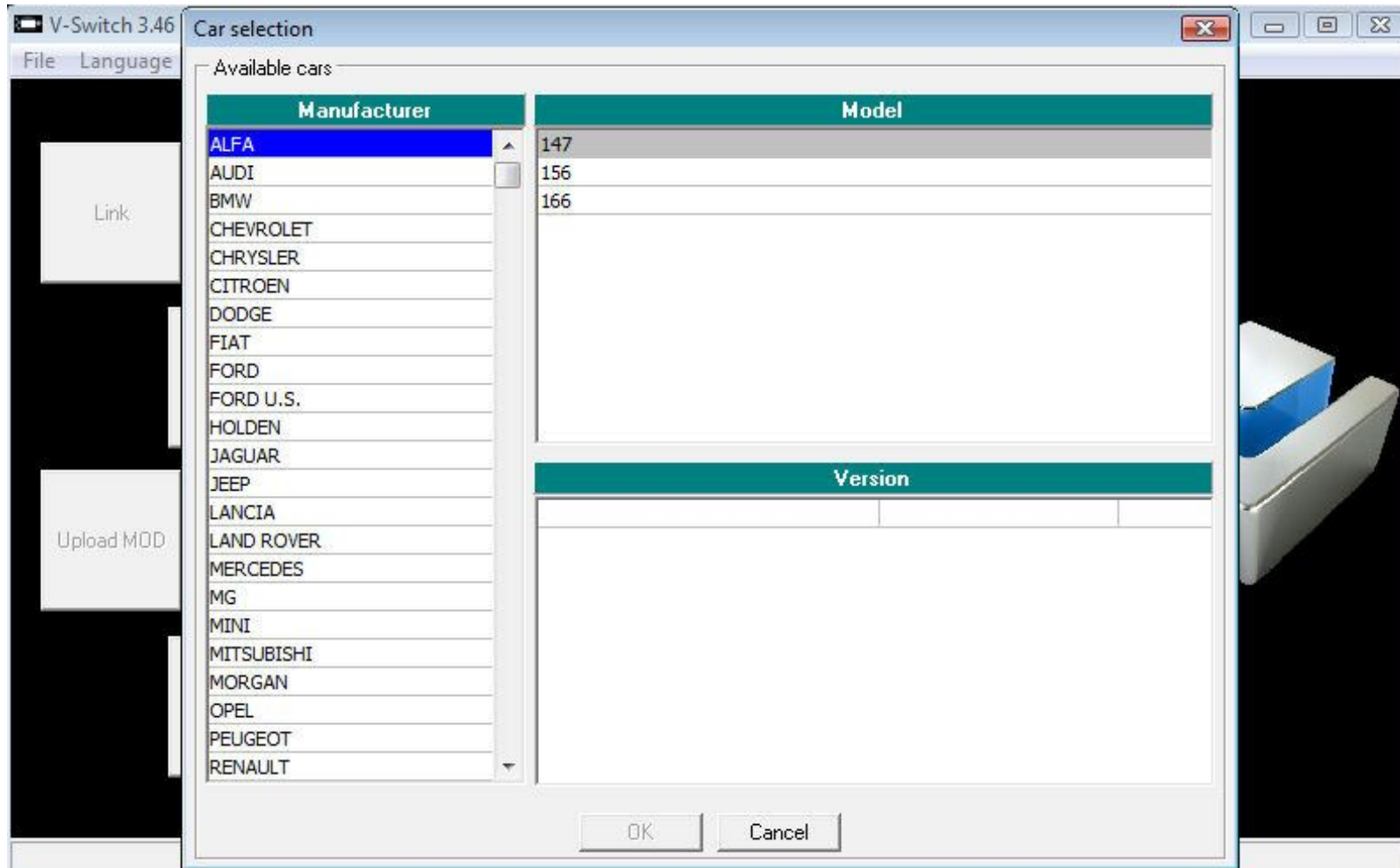


Now open the software from your desktop



When the console has opened up you must select 'link'

When the communication has completed it will bring up the vehicle selection screen



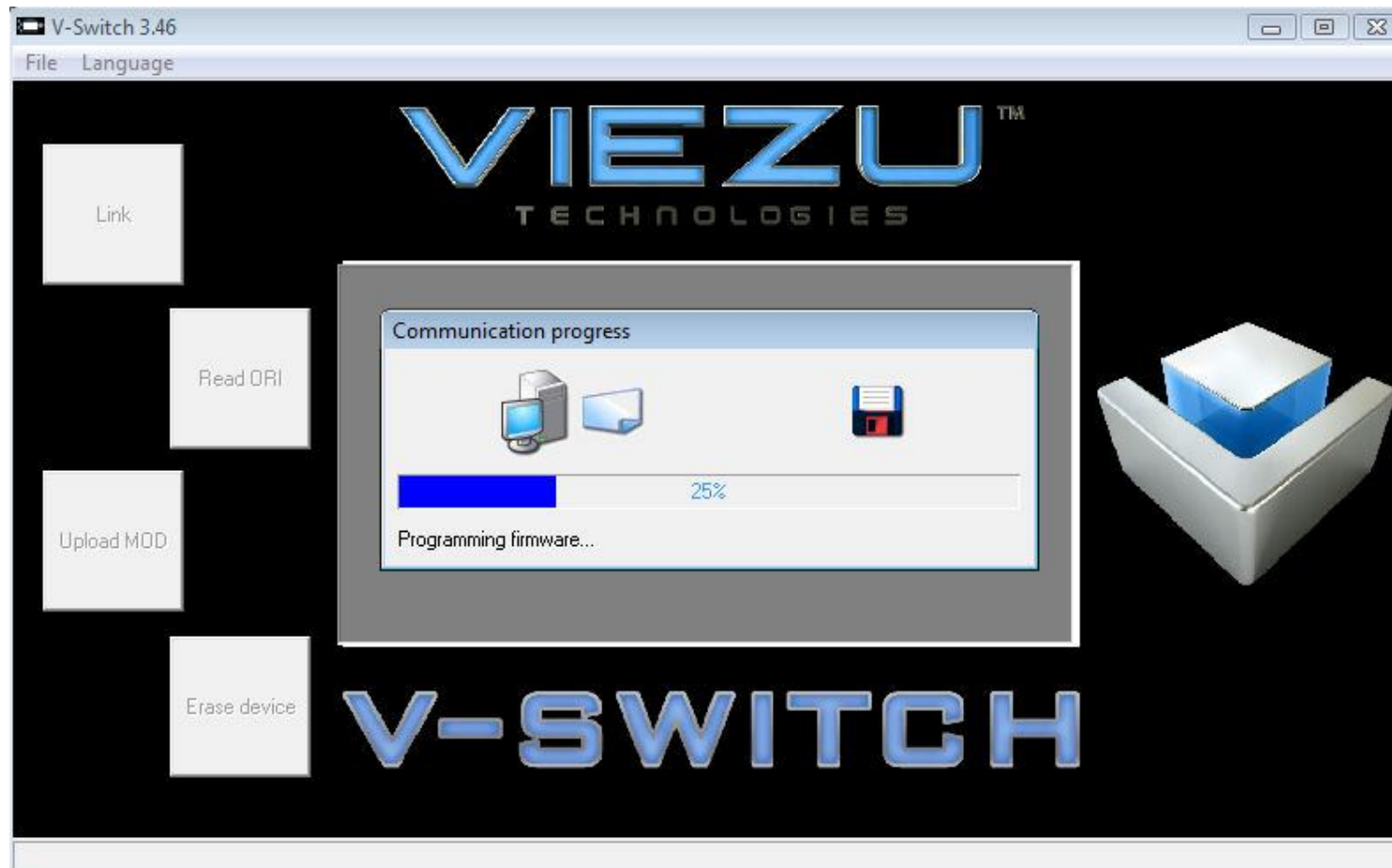
Now select your vehicle (example: VW Golf IV 130pd TDI)

The screenshot shows a 'Car selection' dialog box with a close button (X) in the top right corner. The dialog is titled 'Available cars' and contains two main sections: 'Manufacturer' and 'Model'. The 'Manufacturer' list includes ALFA, AUDI, CHRYSLER, FIAT, FORD, JAGUAR, JEEP, LANCIA, LAND ROVER, MERCEDES, MORGAN, RENAULT, SEAT, SKODA, and VW. The 'Model' list includes BORA, CADDY, CRAFTER 35, EOS, FOX, GOLF IV, GOLF V, JETTA, LUPO, MULTIVAN, and NEW BEETLE. The 'GOLF IV' model is selected, and its 'Version' list is displayed below it. The version list includes 1900 TDI 101HP, 1900 TDI 110HP, 1900 TDI 115HP, 1900 TDI 130HP, 1900 TDI GTI 150HP, and 1900 TDI 90HP. The '1900 TDI 130HP' version is highlighted in blue, indicating it is the selected option. At the bottom of the dialog are 'OK' and 'Cancel' buttons.

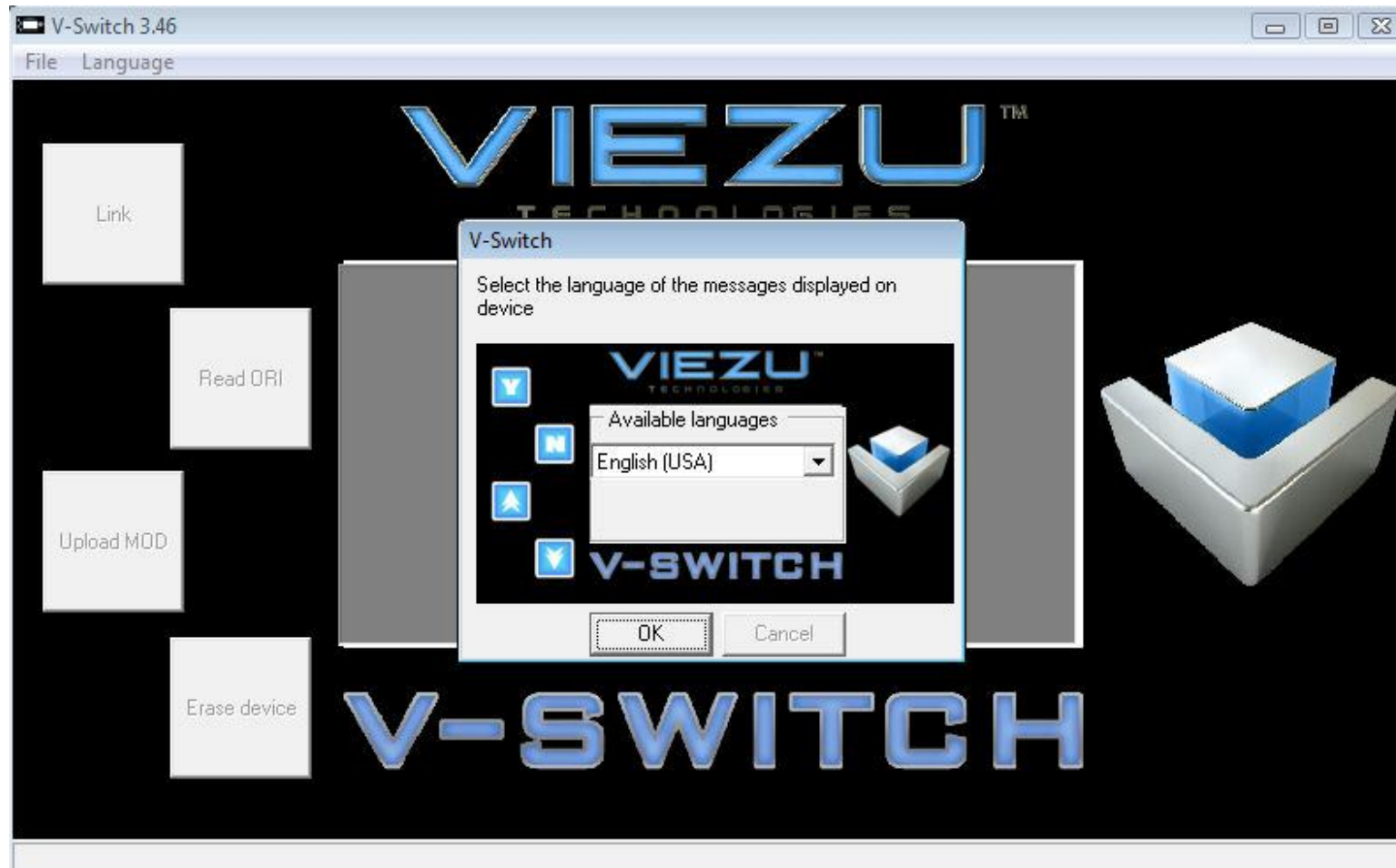
Manufacturer	Model	Version
ALFA	BORA	
AUDI	CADDY	
CHRYSLER	CRAFTER 35	
FIAT	EOS	
FORD	FOX	
JAGUAR	GOLF IV	
JEEP	GOLF V	
LANCIA	JETTA	
LAND ROVER	LUPO	
MERCEDES	MULTIVAN	
MORGAN	NEW BEETLE	
RENAULT		
SEAT		
SKODA		
VW		

Version	
1900 TDI 101HP	105
1900 TDI 110HP	105
1900 TDI 115HP	105
1900 TDI 130HP	105
1900 TDI GTI 150HP	105
1900 TDI 90HP	105

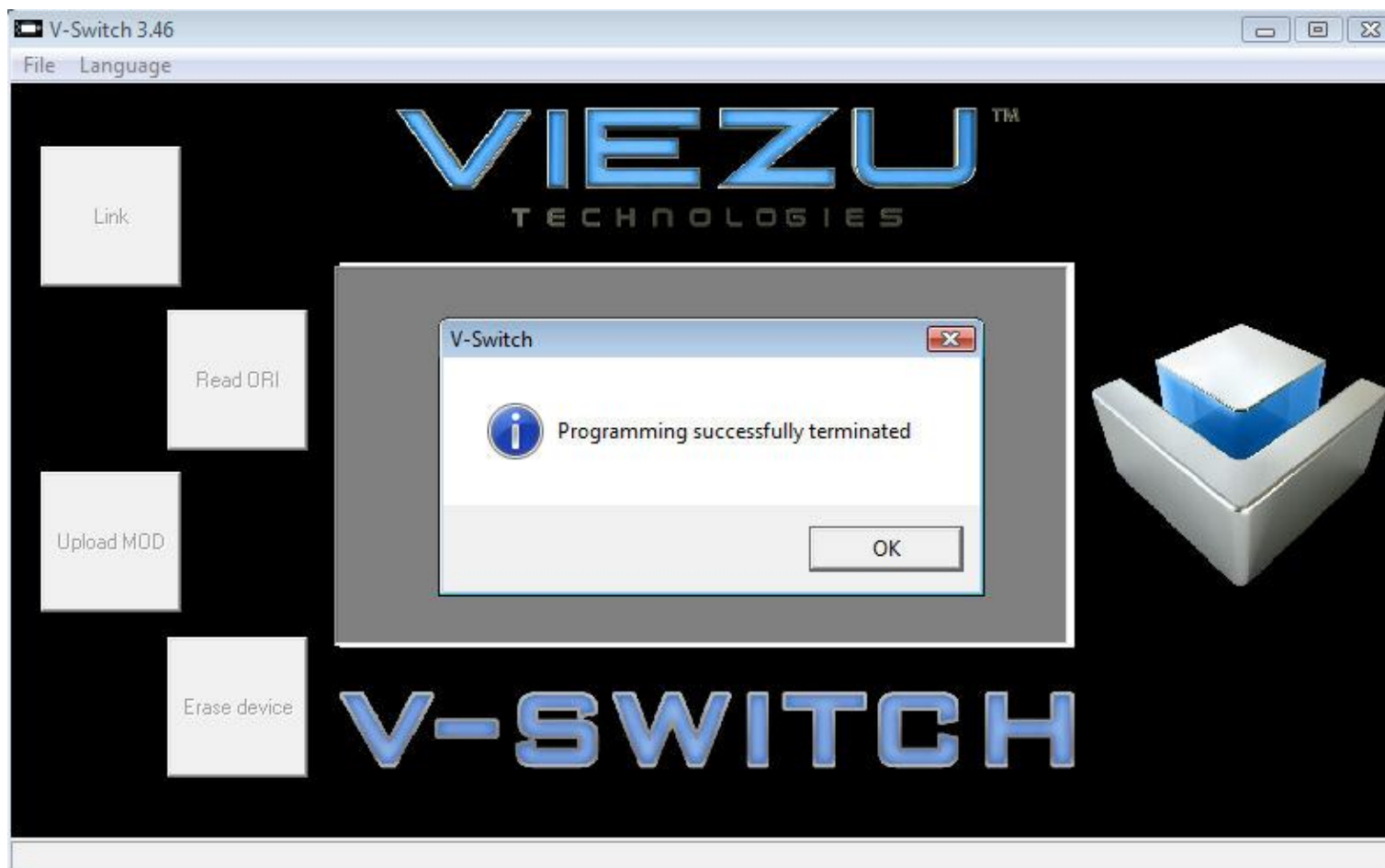
The console is now programming the device to read your car



Once the device has been programmed
you will need to select the language



The device is now ready to use



Now go and read the original file from your car

Press down on the device to highlight 'Read file from ECU'



Press 'Y' to continue to the read process

Follow the on screen instructions to continue





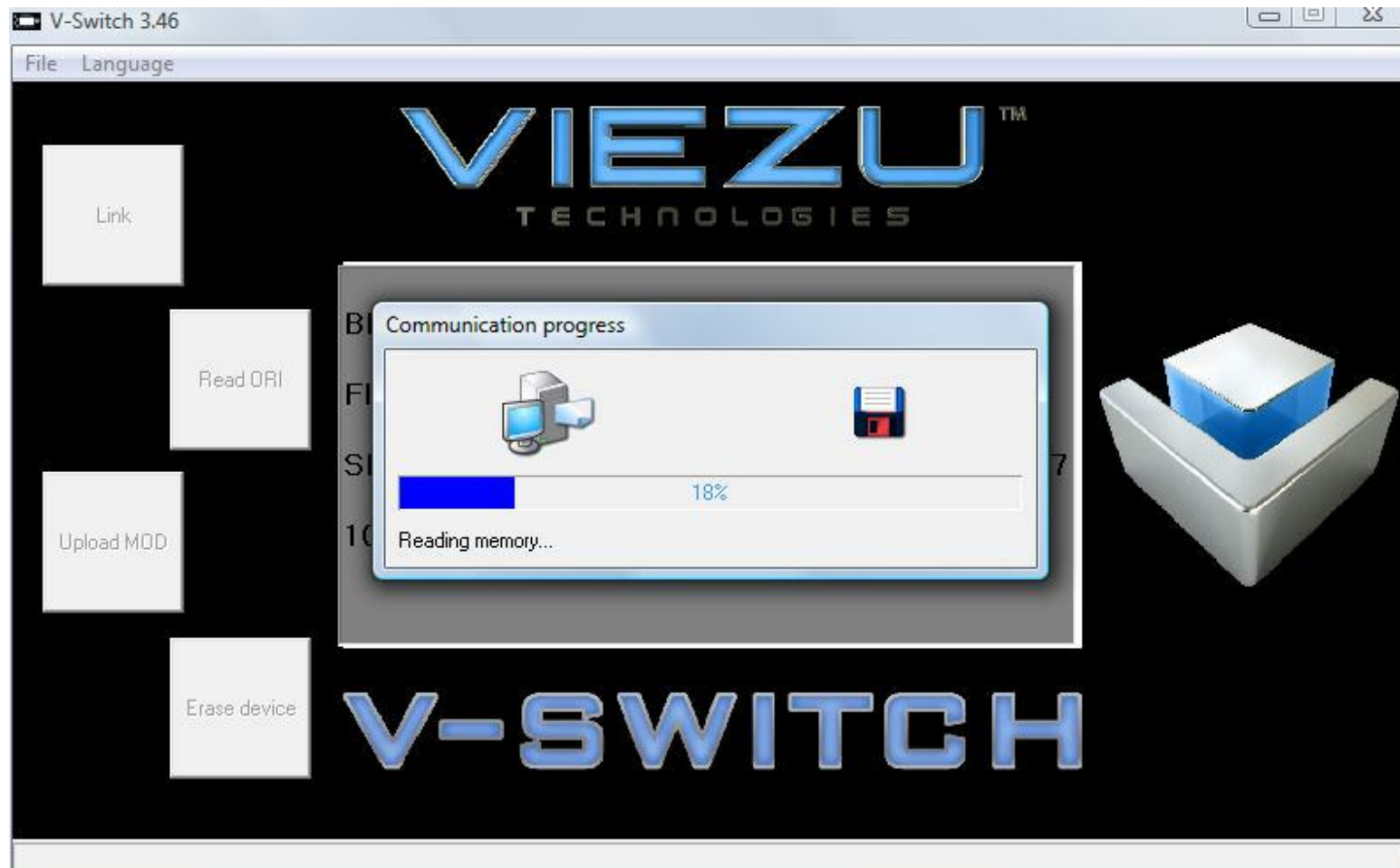




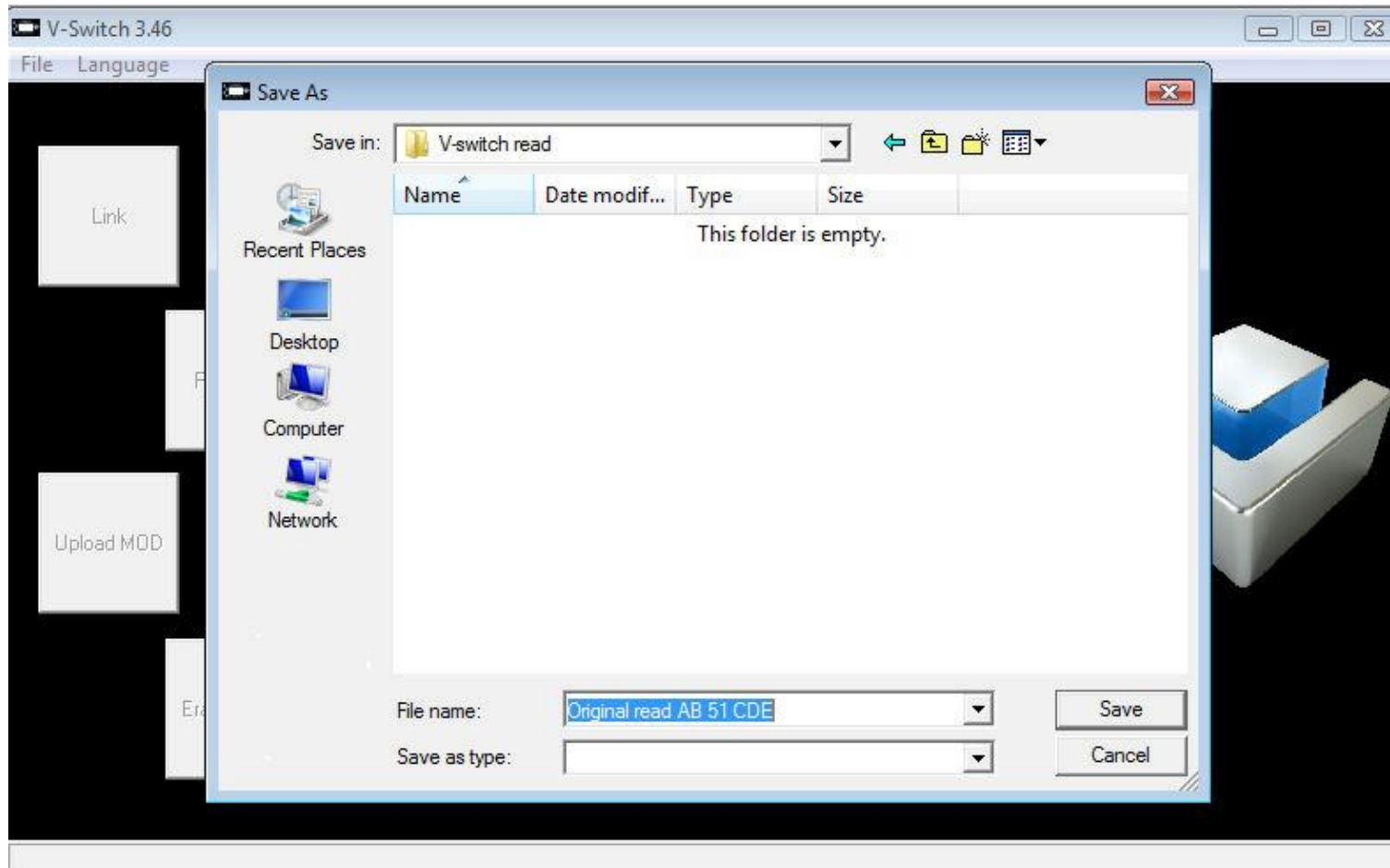


Now return to the computer and connect via the USB cable

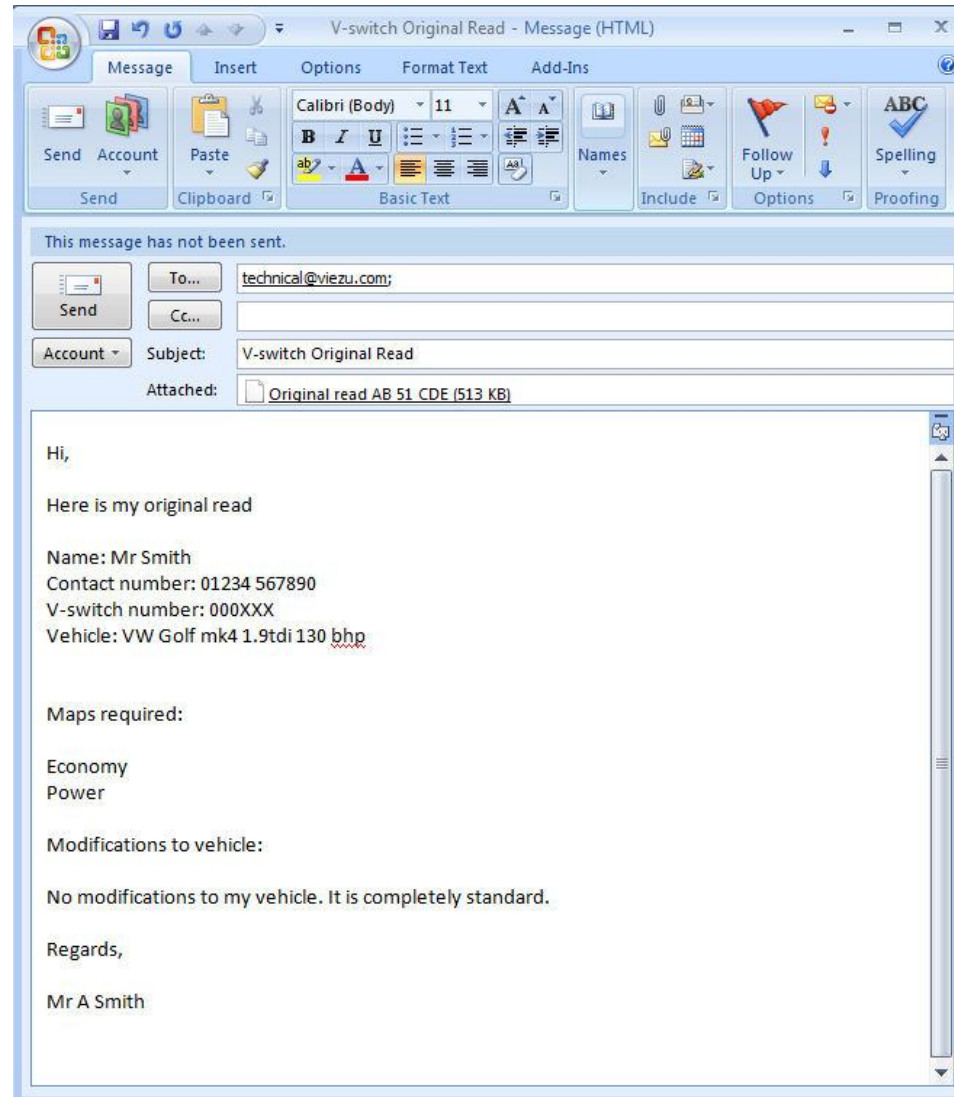
'Link' to device and select 'Read ORI'



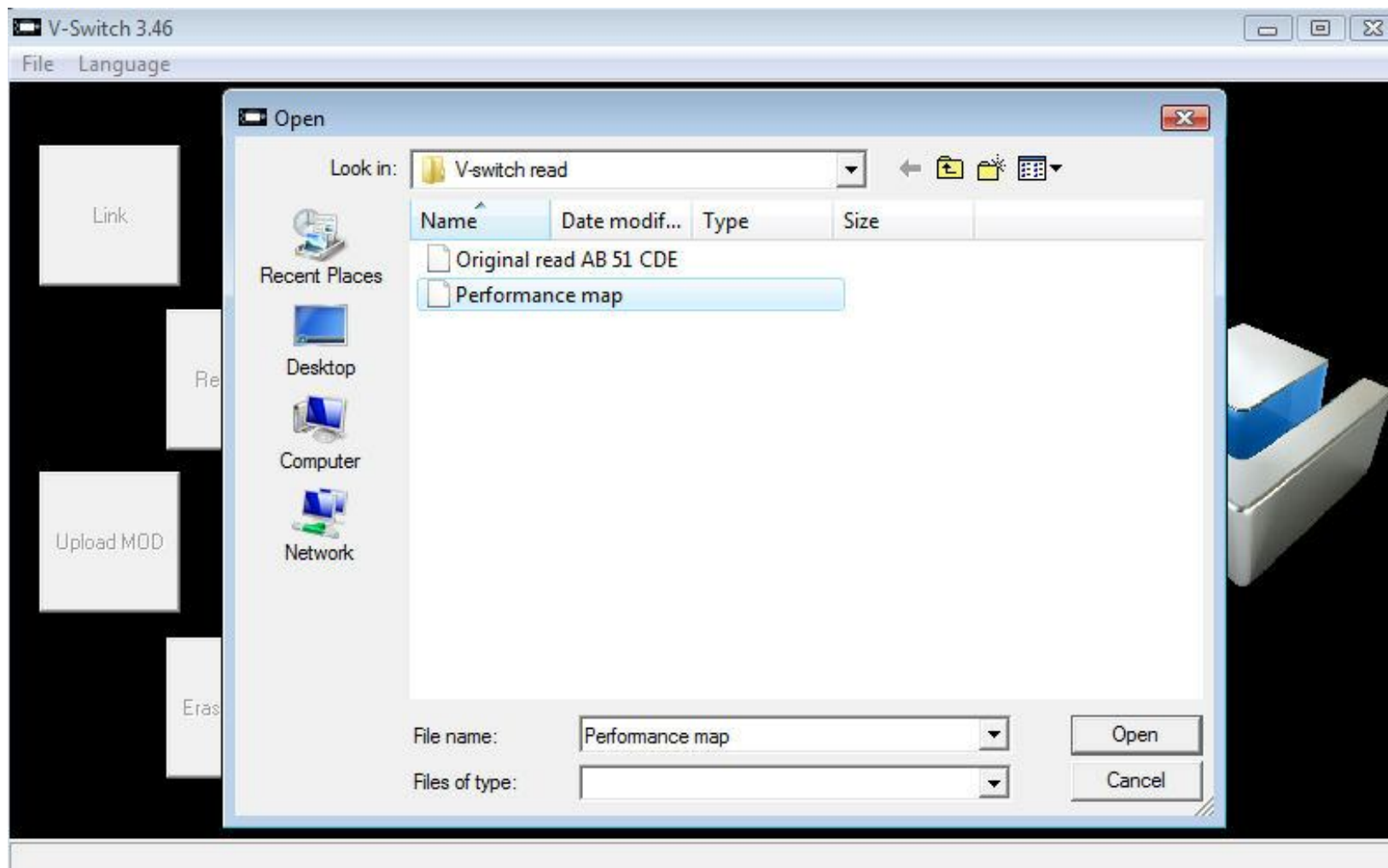
Select a location to save the original read to and name it

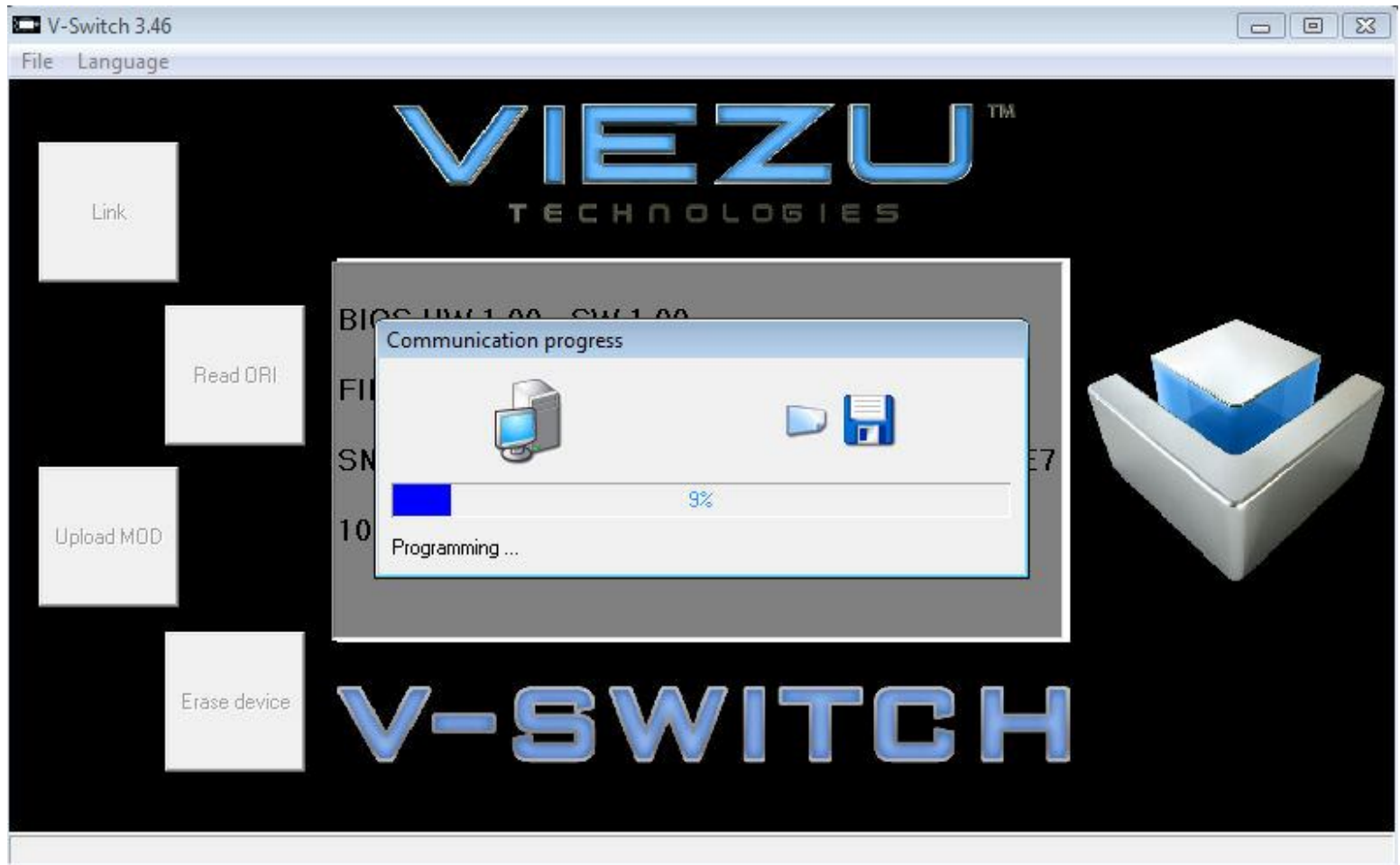


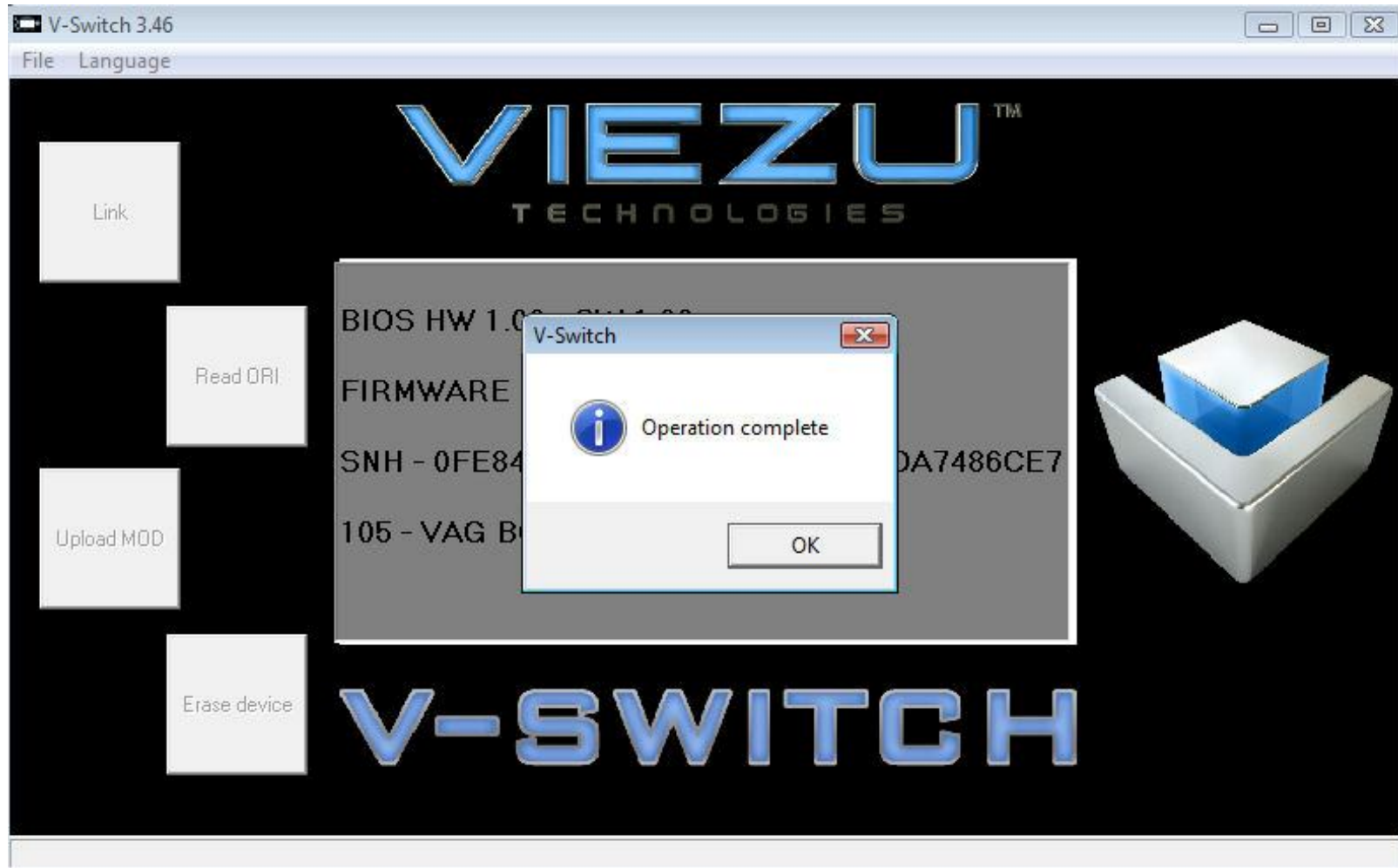
Open up a new e-mail and attach the file as shown below,
then send to technical@viezu.com



When you receive the mod files back, you need to 'link' to the V-switch and 'Upload MOD'







Now you may return to your vehicle to begin tuning

Press the down arrow to select 'Write file to ECU'

Press the 'Y' button



Follow the onscreen instructions to continue













Congratulations, you have now tuned your vehicle

